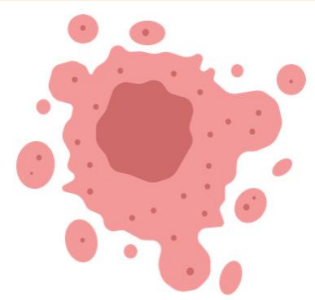


Stephanie Marín, BS, Nadine Del Rosario, BS, Don F. King, MD  
All authors have no. disclosure

## BACKGROUND

Basal cell carcinoma (BCC) is the most common skin malignancy, often requiring surgical excision for treatment.



Paraffin-embedded sections are time-consuming, while frozen sectioning requires specialized equipment that is often unavailable in outpatient dermatology settings.



Squash preparation is a lab technique that can rapidly diagnose BCC in clinical practices.

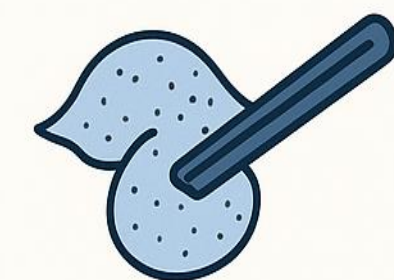


## OBJECTIVES

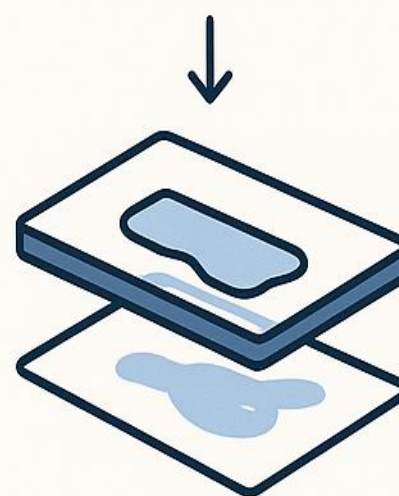
To demonstrate the clinical utility of the squash preparation technique as a rapid, cost-effective method for diagnosing basal cell carcinoma (BCC) in outpatient dermatologic settings, where traditional histopathologic resources may be limited.

## METHODS

### SQUASH PREPARATION METHOD



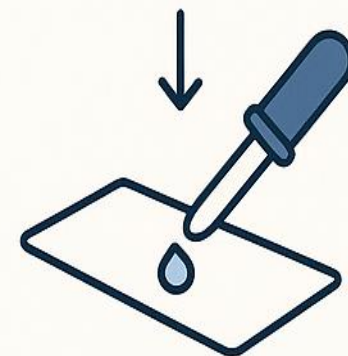
Tissue Placement



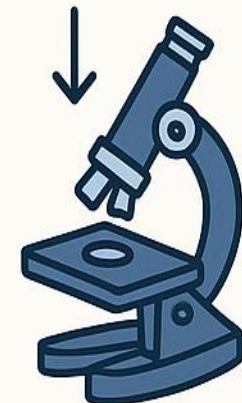
Squash Method (gently pressing slides together)



Fixation



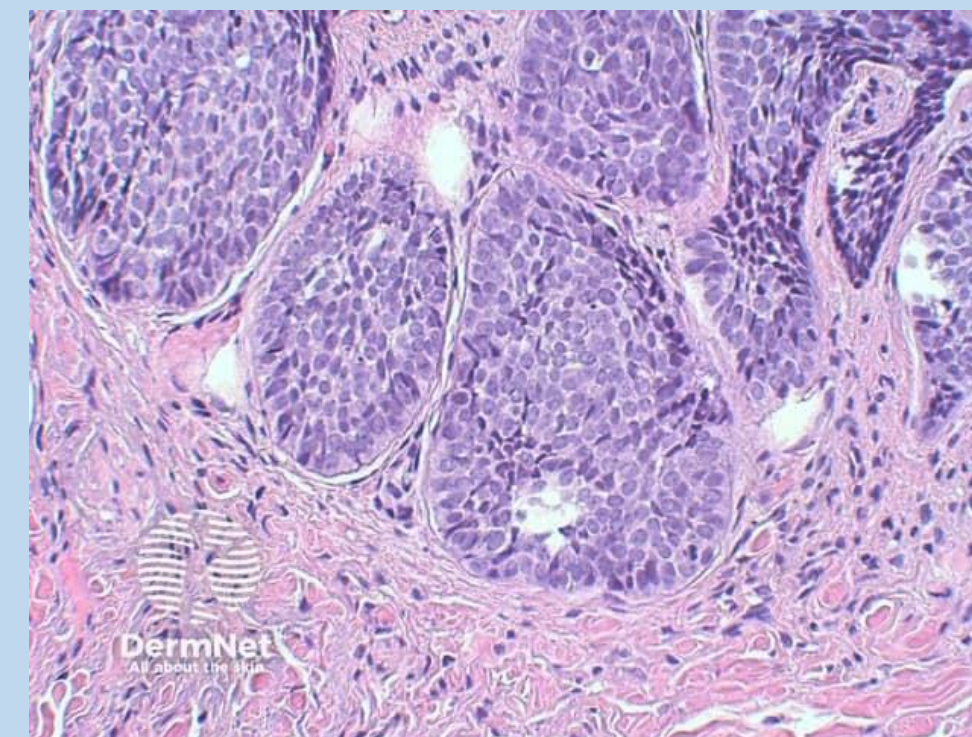
Staining



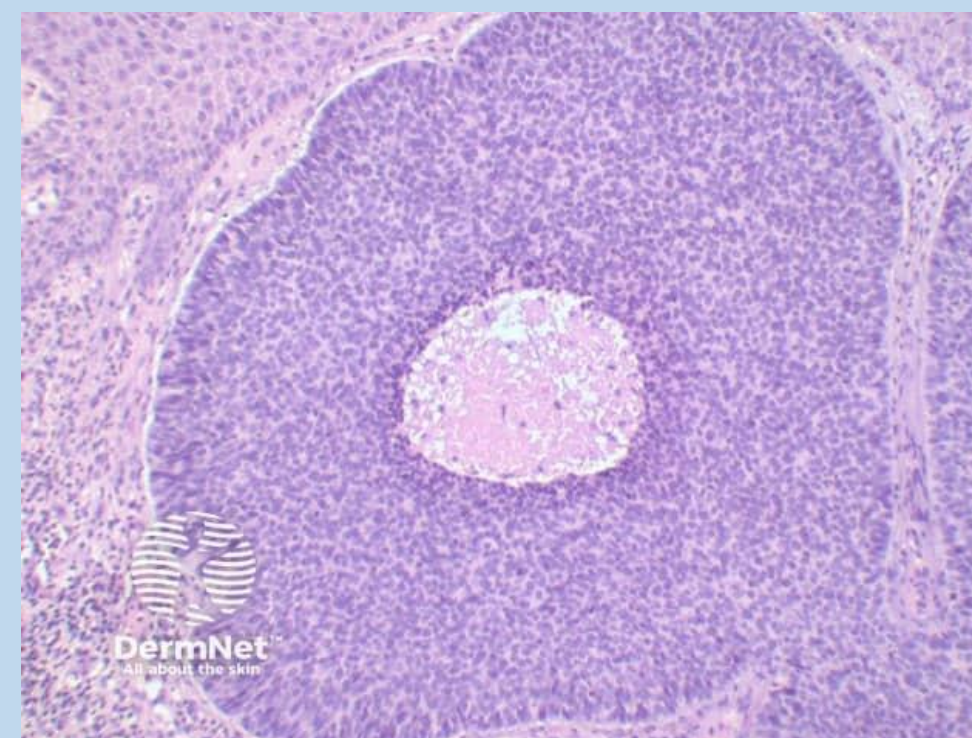
Microscopic Examination

## RESULTS

**Figure 1.** Basal cell carcinoma, hematoxylin & eosin stain,  $\times 100$  magnification



**Figure 2.** Basal cell carcinoma, hematoxylin & eosin stain,  $\times 200$  magnification



## DISCUSSION

The squash preparation method offers a rapid, reliable, and cost-effective alternative for diagnosing basal cell carcinoma (BCC), addressing key limitations of conventional histopathology and other cytological techniques.

By enabling immediate microscopic confirmation and facilitating same-day definitive treatment, this method reduces patient burden, minimizes procedural delays, and enhances overall clinical efficiency in dermatologic practice.

## References

- Kane, S. V., Prabhudesai, N. M., Ojha, S. S., Shetty, N. S., Kulkarni, A. V., & Kulkarni, S. S. (2014). The role of squash cytology in rapid on-site adequacy checking and rapid diagnosis in image-guided gun biopsy at a tertiary cancer center. *Acta cytologica*, 58(1), 33–41. <https://doi.org/10.1159/000355979>
- Mitra S, Kumar M, Sharma V, Mukhopadhyay D. Squash preparation: A reliable diagnostic tool in the intraoperative diagnosis of central nervous system tumors. *J Cytol*. 2010 Jul;27(3):81–85.
- Pasquali P, Segurado-Miravalles G, Castillo M, Fortuño Á, Puig S, González S. Use of Cytology in the Diagnosis of Basal Cell Carcinoma Subtypes. *J Clin Med*. 2020 Feb 25;9(3):612. doi: 10.3390/jcm9030612. PMID: 32106408; PMCID: PMC7141104.
- Tallon, B. (2016, December). Squash preparation method references for cytology and histopathology. *DermNet*. <https://dermnetnz.org/topics/basal-cell-carcinoma-pathology>