

Optimizing Outcomes: Dermoscopy for Pigmented Lesions

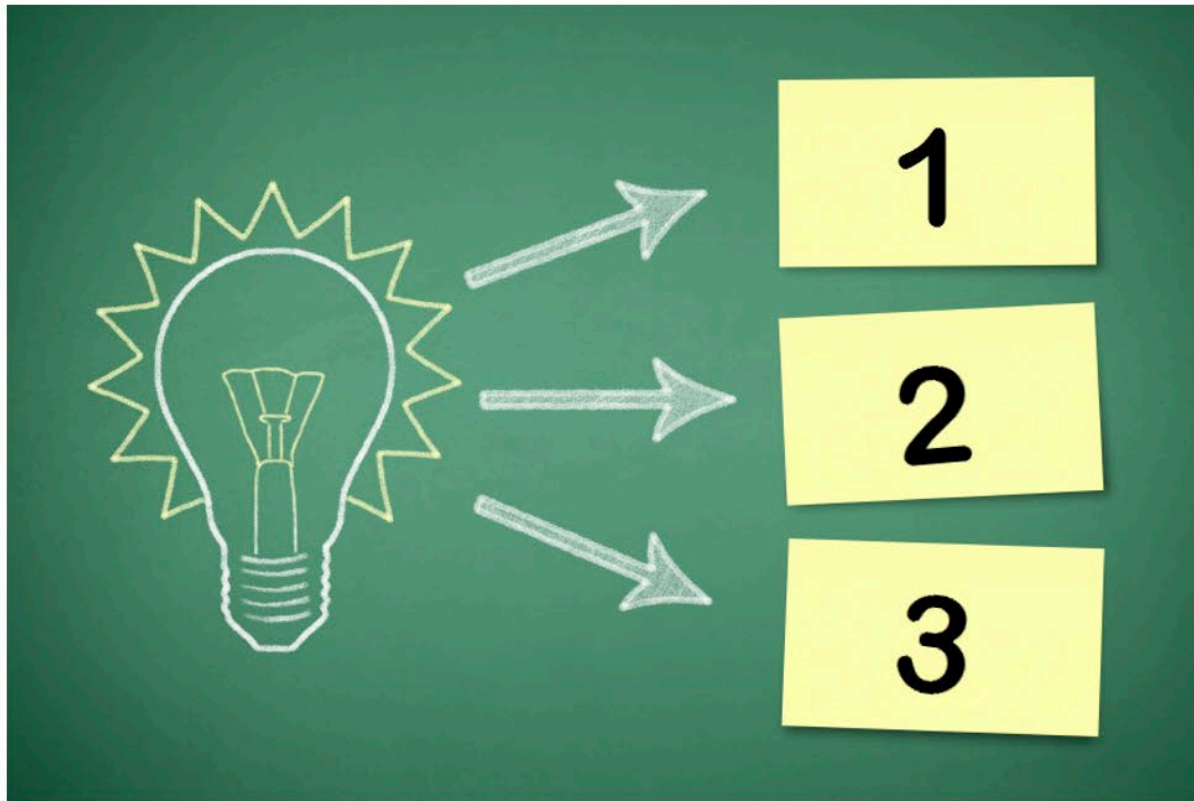
Teo Soleymani, M.D., F.A.A.D, A.C.M.S
Director, Pigmented Lesions and Melanoma Clinic
Co-Director, Fellowship Education
Co-Director, Resident Surgery Education
Mohs Micrographic Surgery
Dermatologic Oncology
Division of Dermatology
UCLA

Disclosures

- None

Algorithmic Approach to Dermoscopy

3 step approach



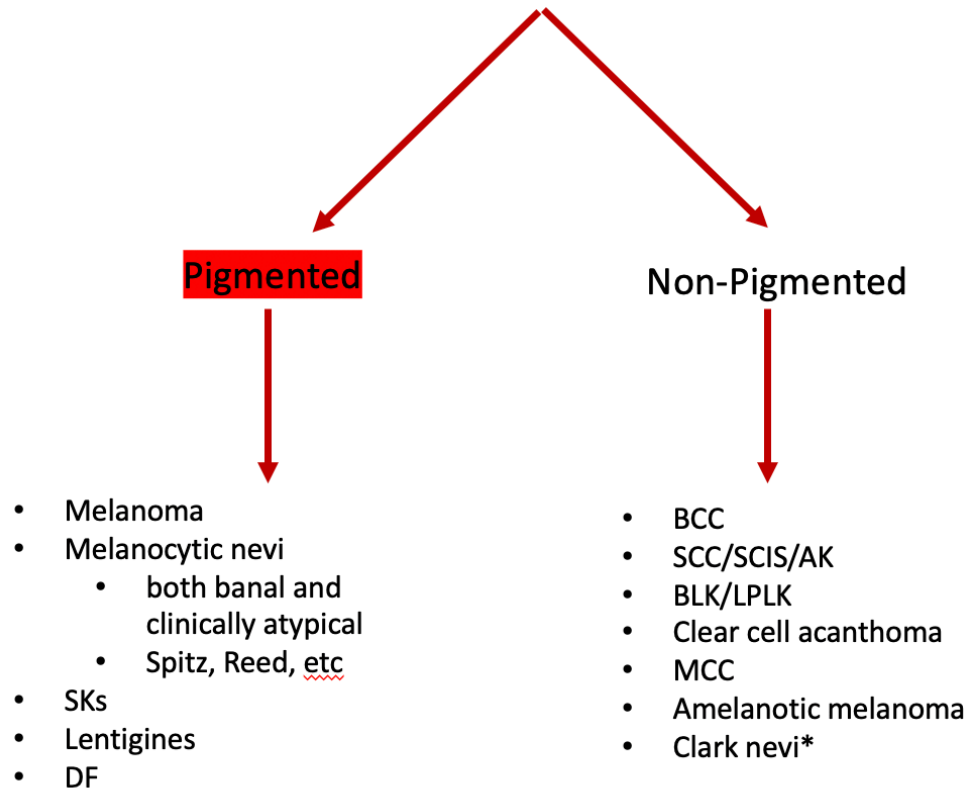
Morphology

Architectural arrangement

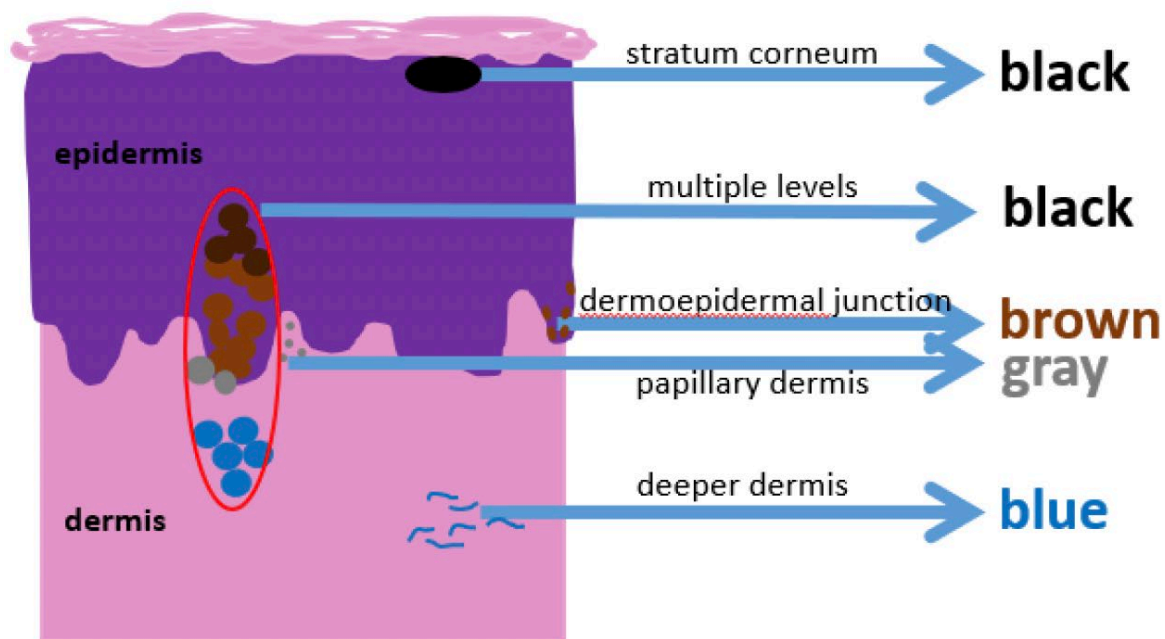
Additional supportive features

Algorithmic Approach to Dermoscopy

Neoplasm of uncertain behavior

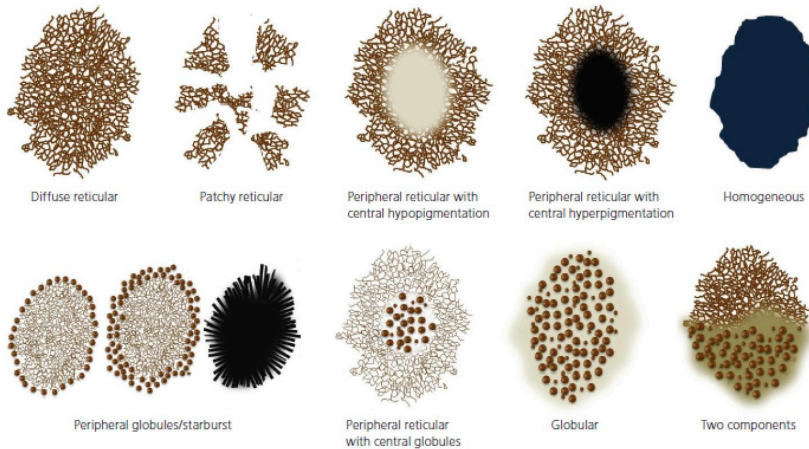


Algorithmic Approach to Dermoscopy



Algorithmic Approach to Dermoscopy

Pattern Recognition



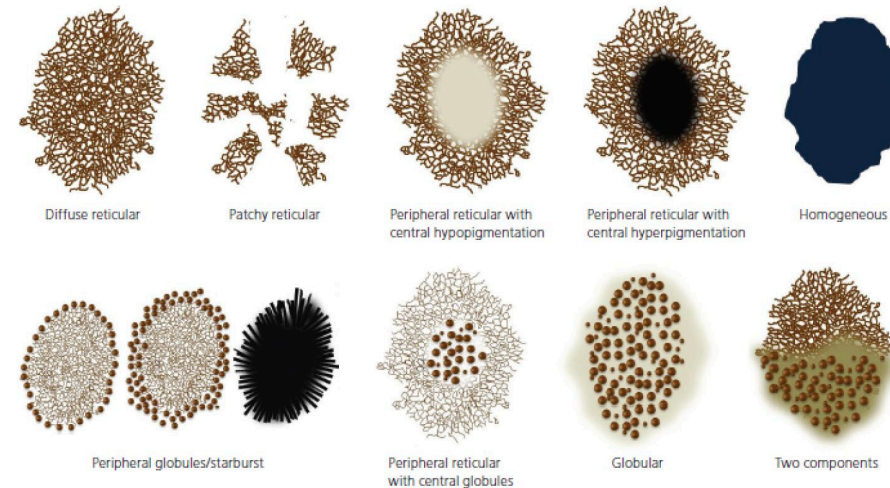
Descriptive terminology	Metaphoric terminology	Significance
Structureless zone, brown or black	Blotch (central vs eccentric)	Central: nevus Eccentric: melanoma
Structureless, blue	Blue/white veil	Melanoma, nevi
Structureless, white	Scar-like depigmentation	melanoma

Algorithmic Approach to Dermoscopy

Descriptive terminology	Metaphoric terminology	Significance
Dots, gray	Peppering	Melanoma, LPLK
Globules, brown, organized	Globules, organized; Cobblestone	Various diagnoses Dermal nevi
Globules, varying colors, disorganized	Globules, disorganized	Various diagnoses
Globules, brown, peripheral	Globules, peripheral	Enlarging nevi
Globules, blue/grey	Blue/grey ovoid nests	Pigmented BCC












Descriptive terminology	Metaphoric terminology	Significance
Lines, reticular	Pigmented network Organized vs disorganized	Melanocytic lesions, dermatofibroma, melanoma
Curved lines, thick	Fat fingers, cerebriform	SK
Curved lines, thin	Fingerprinting	Solar lentigo
Lines, radial and segmental	Radial streaming	Melanoma, recurrent nevi
Lines, radial and segmental with peripheral bulbous projection	Pseudopods	Melanoma, spitz nevi
Lines, radial, connected to common base	Leaf-like areas	BCC
Lines, radial, converging to central dot	Spoke wheel area	BCC

Pattern Recognition


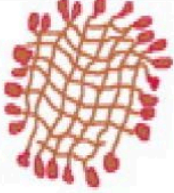
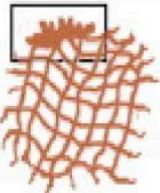
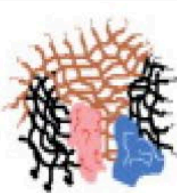
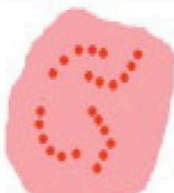
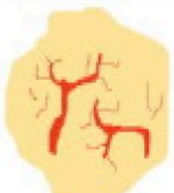


Algorithmic Approach to Der

Descriptive terminology	Metaphoric terms	Significance
Dots		Flat melanocytic lesions, inflammatory, bowens
Clods	Red/purple lacunae	hemangiomas
Linear		Various diagnoses
• Serpentine	Linear irregular	Flat BCC, melanoma
• Curved	Comma	Dermal nevi
• Looped	Hairpin	SKs, KA, SCC, verruca
• Helical	Corkscrew	Melanoma, metastasis
• Coiled	Glomerular	Bowen disease
Mono-morphous		Varying diagnoses
Polymorphous		Malignancy (context)

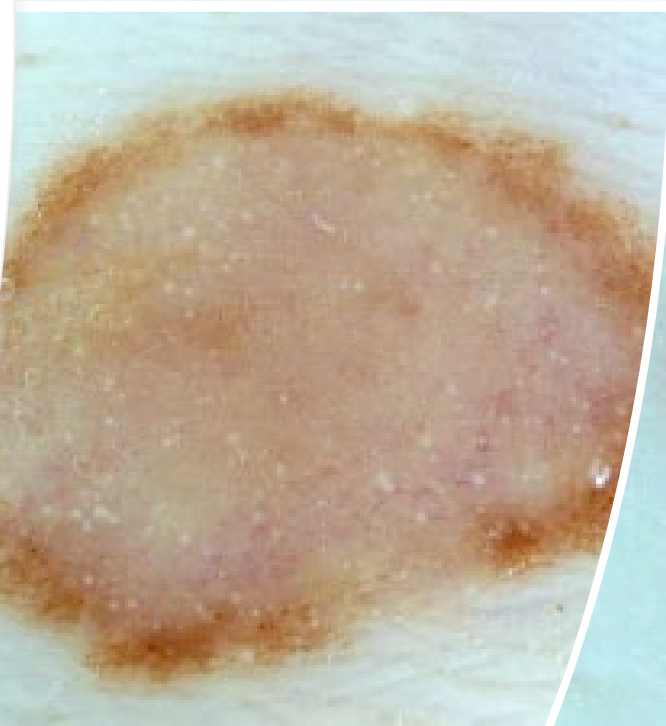
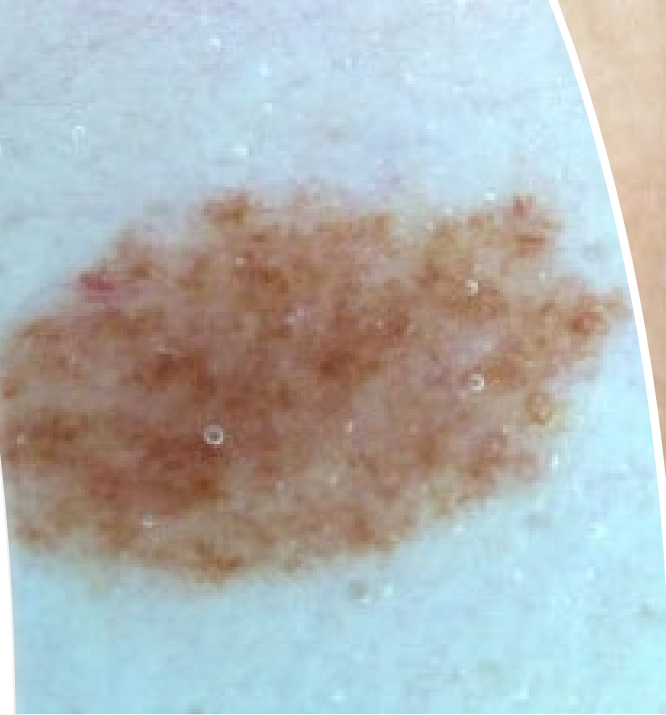
Vascular Pattern	Description	Interpretation	Diagram
Arborizing vessels or telangiectasias	In-focus large -caliber vessels that branch into finer secondary vessels	- Basal cell carcinoma - Adnexal tumors	
Hairpin vessels	Vessels that double back on themselves and are seen as loops when they are oblique to the surface of the lesion; in keratinizing tumors, they are surrounded by a hypopigmented halo	- Regular: seborrheic keratosis - Irregular: melanoma, Spitz nevus, and keratoacanthoma	
Crown vessels	Barely branching peripheral vessels that do not cross the center of the lesion	- Sebaceous hyperplasia - Molluscum contagiosum	
Comma vessels	Thick, linear curved lines with little branching and occasionally one end that is thicker than the other	- Compound or dermal nevus	
Dotted vessels	Small-caliber reddish vessels that resemble a pinhead	- Spitz nevus - Melanoma - Inflammatory lesions	
Glomerular vessels	Larger-caliber reddish dots formed by tortuous capillaries curled up into a ball or resembling the glomerular apparatus of the kidneys	- Bowen disease - Stasis dermatitis	
Corkscrew vessels	Linear irregular spiral vessels areas containing atypical linear vessels	- Melanoma - Melanoma metastasis	
Milky-red areas/globules	Out-of-focus pink-reddish oval or polygonal areas containing atypical linear vessels	- Melanoma	
Strawberry pattern	Structureless erythematous areas with heterogeneous whitish areas forming a type of pseudonetwork	- Melanoma - Superficial basal cell carcinoma	
Linear irregular vessels	Straight vessels varying in shape and size	- Melanoma	
Polymorphous vessels	Different vascular morphologies in the same lesion	- Melanoma - Carcinomas	

Algorithmic Approach to Dermoscopy

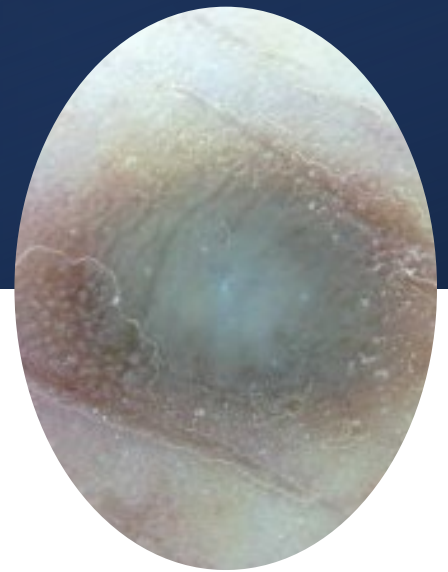
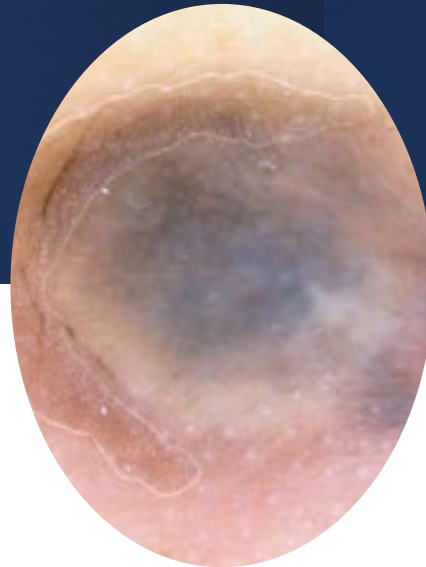
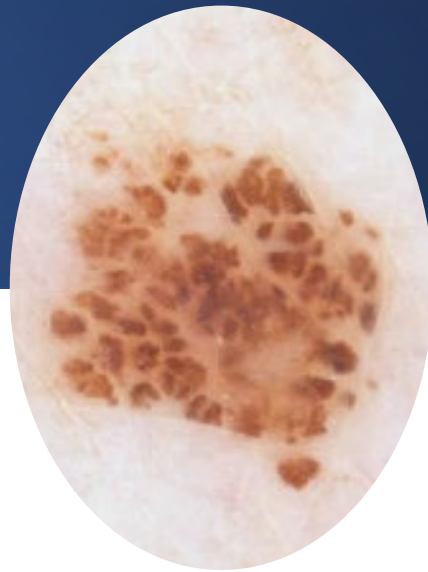
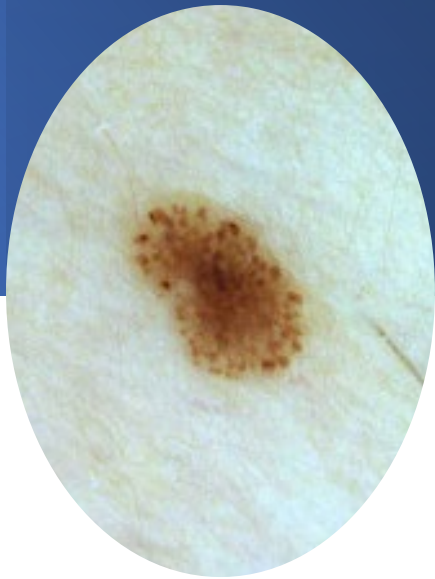
Lesion	Mature Melanocytic Nevus	Spitz Nevus	Dysplastic Nevus	Melanoma	Clear-Cell Acanthoma	Basal Cell Carcinoma
Type of vessels	Comma	Dotted	Dotted and comma	Thin tumors (< 1 mm): dotted vessels Intermediate tumors (1-2 mm): dotted and linear irregular vessels Thick tumors: polymorphous vessels	Dotted	Telangiectasias
Distribution	Regular	Regular	Regular/irregular	Irregular	String of pearls	Branching
Additional criteria	<ul style="list-style-type: none"> - Comedo-like openings/milia-like cysts - Terminal hair - Residual brown pigmentation 	<ul style="list-style-type: none"> - Pink background - Melanocytic criteria: - Inverted network - Chrysalis structures 	<ul style="list-style-type: none"> - Melanocytic criteria 	<ul style="list-style-type: none"> - Atypical melanocytic criteria: - Chrysalis structures 	<ul style="list-style-type: none"> - Erythematous background 	<ul style="list-style-type: none"> - Blue-gray nests and ovoid globules - Maple leaf-like areas - Wheel spoke areas - Ulceration
Diagram						



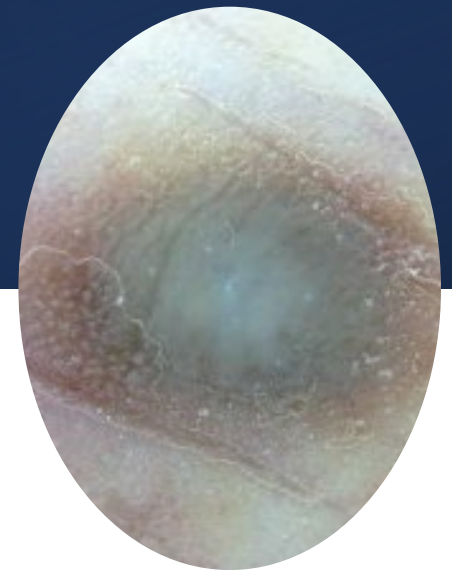
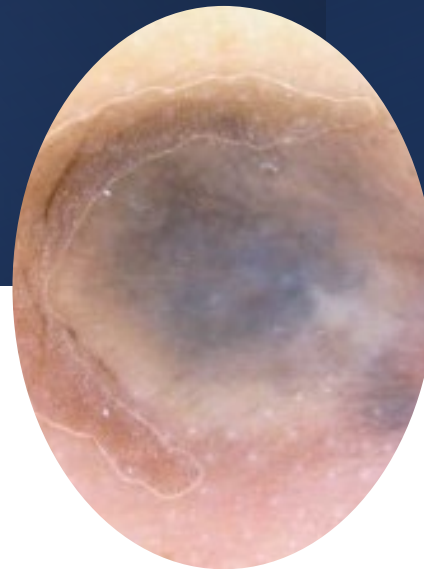
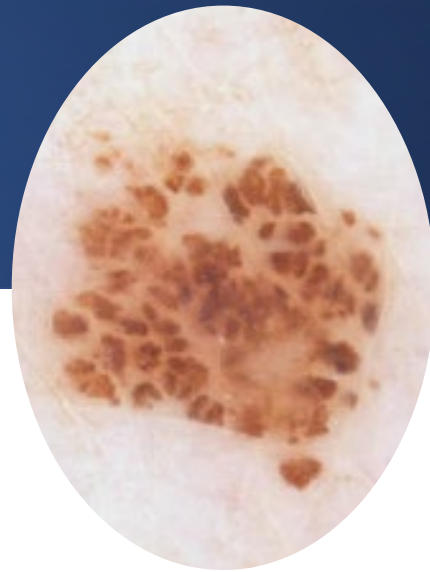
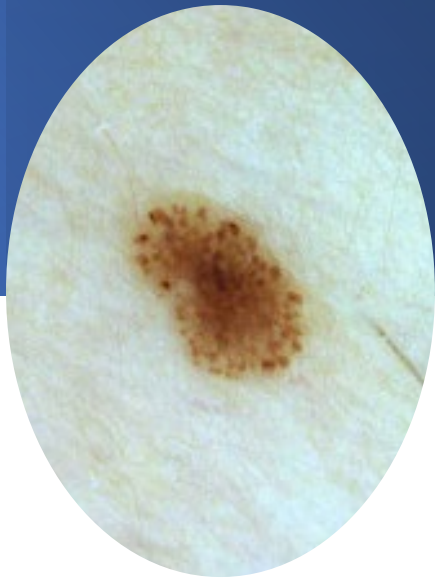
Algorithmic Approach to Dermoscopy



Algorithmic Approach to Dermoscopy

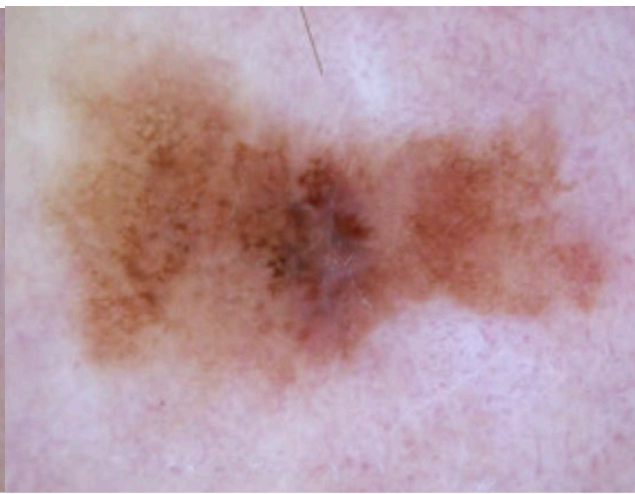
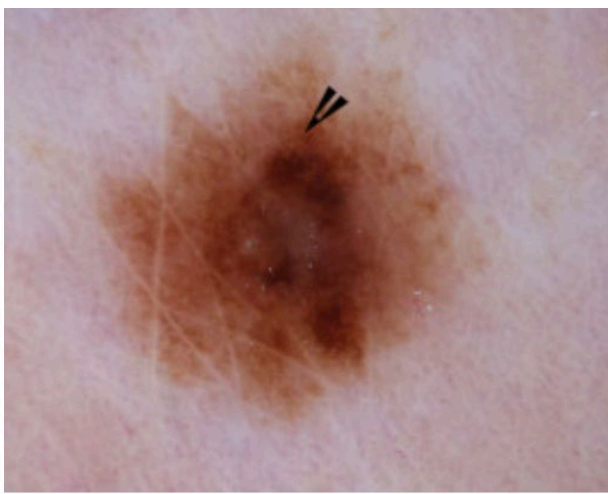
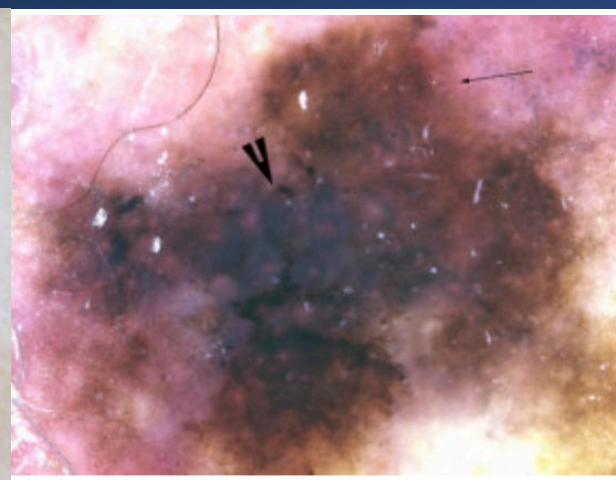
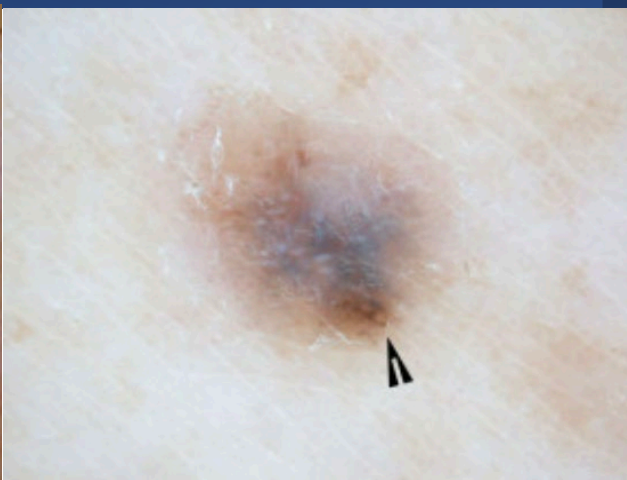


Algorithmic Approach to Dermoscopy

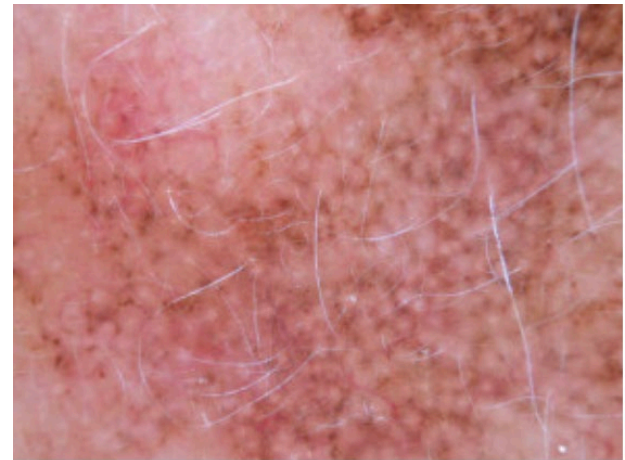
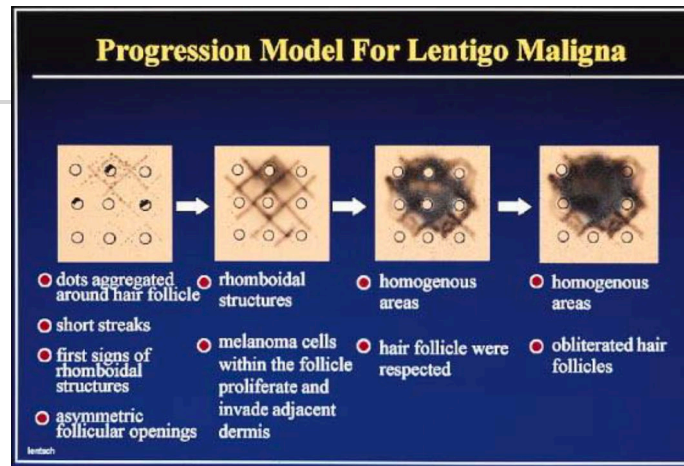
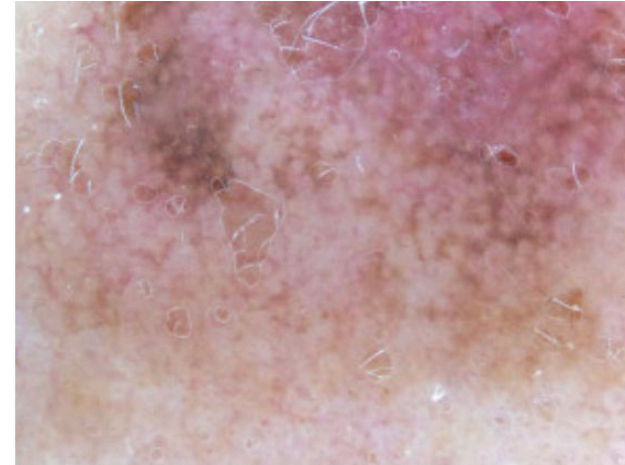
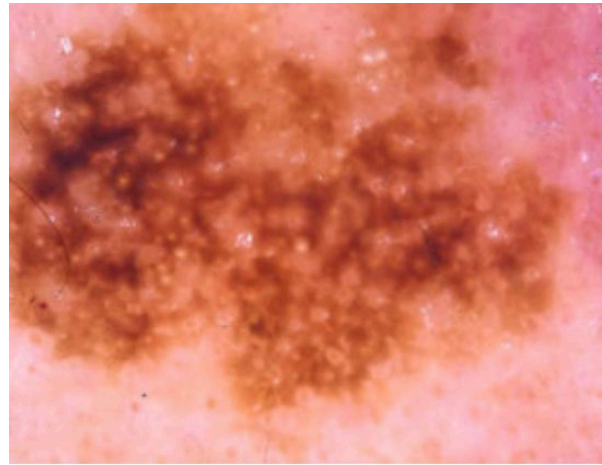


Mimicker of cutaneous melanoma metastases!

Algorithmic Approach to Dermoscopy



Algorithmic Approach to Dermoscopy



Thank you!